

Family Steak House



STEAK COMBOS

SERVED WITH 6oz
TRI-TIP SIRLOIN AND
CHOICE OF SIDE
80-760 CALS

		Cals
STEAK* & JUMBO CRISPY SHRIMP (6)	18.99	720
STEAK* & UNLIMITED CRISPY SHRIMP ★	21.99	900+
STEAK* & ITALIAN HERB CHICKEN	17.49	490
STEAK* & MALIBU CHICKEN	16.99	920
STEAK* & GRILLED SHRIMP SKEWERS (2)	21.99	690
New! All-natural, wild caught jumbo shrimp.		
CLASSIC STEAK* TRIO ★	21.99	1270
Steak, jumbo crispy shrimp & Malibu Chicken®		
STEAK* & LOBSTER ★	28.99	720
Wild caught, cold water lobster.		

**UPGRADE YOUR STEAK TO 8oz
FOR AN EXTRA \$3.69**

UNLIMITED ITEMS ARE PRICED PER PERSON.
PLEASE NO SHARING.

★ **SIZZLER FAVORITES**

*These items are cooked to order. Consuming raw or undercooked meats, poultry, seafood, shell fish or eggs, which may contain harmful bacteria, May increase your risk of foodborne illness, especially if you have certain medical conditions. All specified steak weights are based on pre-cooked weights. We fry in trans fat free oil only. 2,000 calories a day is used for general nutrition advice, but calorie needs vary. Calories do not include choice of side. Additional nutrition information available upon request.

TIER 3 FOUNTAIN VALLEY 7/24



**HAND-CUT
STEAKS**

CHOICE OF
SIDE INCLUDED
80-760 CALS

		Cals
TRI-TIP SIRLOIN* 8oz	17.99	340
Our signature steak perfectly seasoned and full of flavor.		
NEW YORK STRIP* 12oz ★	22.99	830
The steak lovers cut. Lean, juicy & tender.		
RIB EYE 14oz* ★	25.99	1100
Well-marbled, tender, juicy & delicious.		
ADD SAUTÉED MUSHROOMS	2.99	180
ADD SAUTÉED ONIONS	2.99	80



**SAVORY
SEAFOOD**

CHOICE OF
SIDE INCLUDED
80-760 CALS

		Cals
FRESH GRILLED SALMON 6oz ★	19.49	370
CILANTRO LIME BARRAMUNDI	18.49	450
GRILLED SHRIMP SKEWERS (2)	17.49	440
SHRIMP, SHRIMP, SHRIMP	18.49	1240
Mini crispy, jumbo crispy and shrimp skewer on rice. Side not included.		



**SLOW-COOKED
RIBS AND
CHICKEN**

CHOICE OF
SIDE INCLUDED
80-760 CALS

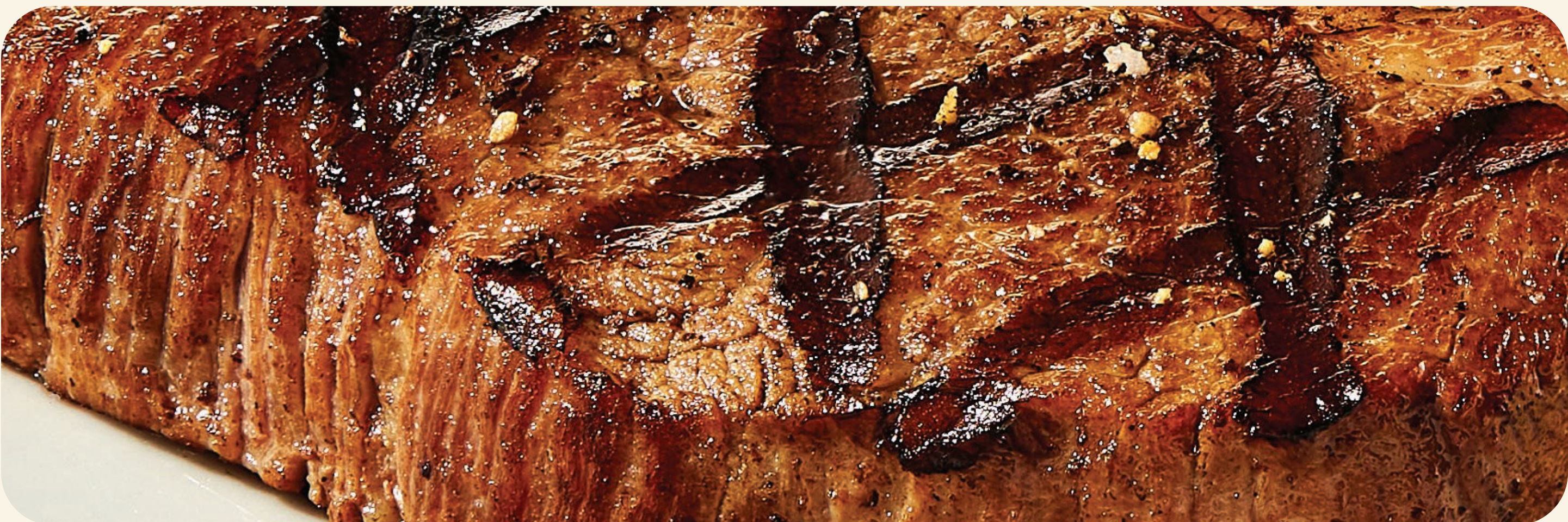
		Cals
STEAK HOUSE RIBS	18.99	1870
STEAK HOUSE RIBS & CHICKEN	18.99	1170
DOUBLE MALIBU CHICKEN ★	16.99	1090



**HAND-CRAFTED
BURGERS**

SERVED WITH FRIES
500 CALS

PRIME RIB BURGER	12.99	Cals 1210
CRISPY BACON BURGER	13.99	1280
GRILLED CHICKEN CLUB	12.49	760
MAKE IT MEGA	Extra 4.99	760



**DELICIOUS
SMALLER
PLATES**

INCLUDES CREATE
YOUR OWN SIDE SALAD*
AND CHOICE OF SIDE
80-760 CALS

TRI-TIP SIRLOIN* 6oz ★	16.79	Cals 260
MALIBU CHICKEN®	12.99	680
ITALIAN HERB CHICKEN	13.79	230
JUMBO CRISPY SHRIMP (6)	12.99	430

*See salad bar for calorie declarations



**TRY OUR NEW
SPECIALTY
LEMONADES**

**\$4.79
EACH**

MANGO, PEACH, STRAWBERRY



SALAD BAR

HAND-CRAFTED



UNLIMITED SALAD

UNLIMITED SALAD BAR*	Per Guest 16.99
LUNCH* MON-FRI UNTIL 4PM	13.99
SENIORS*	15.99
Beverage included (0-300 cals).	
KIDS*	8.49

SALAD TO GO

SALAD BAR TO GO*	13.99
------------------	--------------

ADD SALAD TO YOUR ENTRÉE

SALAD BAR (UNLIMITED)*
Includes salad bar, hot bar, soups & desserts.

\$7.99

ITEMS PRICED PER PERSON.
DINE IN ONLY. PLEASE NO SHARING.

**OVER 50
FRESH ITEMS**
INCLUDING SOUPS,
HOT BAR AND DESSERTS

HAND MADE DRESSINGS
SOUPS MADE FRESH DAILY

*See salad bar for calorie declarations

Additional nutrition information available upon request. TIER 3 FOUNTAIN VALLEY 7/24

BEVERAGES

BEVERAGE BAR

\$3.69

0-300 CAL

**PEPSI, DIET PEPSI, MOUNTAIN DEW, DR PEPPER,
ROOT BEER, RASPBERRY ICED TEA**

SENIORS GET A FREE FOUNTAIN BEVERAGE WITH ANY GRILL ENTRÉE

BEER

SM \$5.79

LG \$7.99

HEINEKEN, CORONA, BUDWEISER, BUD LIGHT, MODELO

WINE

ALL WINES BY LINE 39

\$7.49

ROSE, CABERNET SAUVIGNON, CHARDONNAY, MERLOT



KIDS TRI-TIP SIRLOIN

7.99

Cals
180

BREADED CHICKEN TENDERS (2)

6.99

350

GRILLED CHICKEN

6.69

190

KIDS BURGER

6.69

570

INCLUDES A SIDE OF
APPLES OR FRIES

82
CALS

**500
CALS**