

# Family Steak House

100% USDA CHOICE STEAKS



## STEAK COMBOS

SERVED WITH 6oz TRI-TIP SIRLOIN AND CHOICE OF SIDE 80-760 CALS

		Cals
STEAK* & JUMBO CRISPY SHRIMP (6)	20.49	720
STEAK* & UNLIMITED CRISPY SHRIMP ★	24.49	900
STEAK* & ITALIAN HERB CHICKEN	19.49	490
STEAK* & MALIBU CHICKEN	18.99	920
STEAK* & GRILLED SHRIMP SKEWERS (2)	22.99	690
<small>New! All-natural, wild caught jumbo shrimp.</small>		
CLASSIC STEAK* TRIO ★	22.99	1270
<small>Steak, jumbo crispy shrimp &amp; Malibu Chicken*</small>		
STEAK* & LOBSTER ★	29.99	720
<small>Wild caught, cold water lobster.</small>		

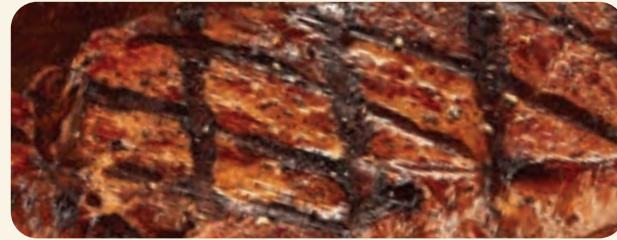
**UPGRADE YOUR STEAK TO 8oz FOR AN EXTRA \$2.49**

UNLIMITED ITEMS ARE PRICED PER PERSON. PLEASE NO SHARING.

★ SIZZLER FAVORITES

\*These items are cooked to order. Consuming raw or undercooked meats, poultry, seafood, shell fish or eggs, which may contain harmful bacteria. May increase your risk of foodborne illness, especially if you have certain medical conditions. All specified steak weights are based on pre-cooked weights. We fry in trans fat free oil only. 2,000 calories a day is used for general nutrition advice, but calorie needs vary. Calories do not include choice of side. Additional nutrition information available upon request.

TIER 4 | 4/26



## HAND-CUT STEAKS

		CHOICE OF SIDE INCLUDED 80-760 CALS	Cals
TRI-TIP SIRLOIN* 8oz	19.49		340
<small>Our signature steak perfectly seasoned and full of flavor.</small>			
TRI-TIP SIRLOIN* 6oz	17.49		260
NEW YORK STRIP* 12oz ★	25.49		830
<small>The steak lovers cut. Lean, juicy &amp; tender.</small>			
RIB EYE 14oz* ★	29.29		1100
<small>Well-marbled, tender, juicy &amp; delicious.</small>			
ADD SAUTÉED MUSHROOMS	2.99		180
ADD SAUTÉED ONIONS	2.49		80



**\$17.49 The SIZZLER**

A sizzling 6oz tri-tip sirloin steak served on thick cut fries and caramelized onions

2020 Cals

## HAND-CRAFTED BURGERS

		SERVED WITH FRIES 500 CALS	Cals
PRIME RIB BURGER	13.79		1210
<small>1/3lb burger on a cheese toast brioche bun with lettuce, tomato, onions, thick-cut American cheese &amp; burger sauce.</small>			
CRISPY BACON BURGER	14.79		1280
<small>The Prime Rib Burger plus crispy bacon.</small>			
STEAK HOUSE SANDWICH	16.99		1650
GRILLED CHICKEN CLUB	13.49		760
MAKE IT MEGA	4.99		403
<small>Extra</small>			



## SLOW-COOKED RIBS AND CHICKEN

		CHOICE OF SIDE INCLUDED 80-760 CALS	Cals
STEAK HOUSE RIBS	18.99		1870
<small>1 lb. served with fries &amp; coleslaw.</small>			
STEAK HOUSE RIBS & CHICKEN	18.99		1170
<small>1/2 lb. ribs &amp; chicken breast served with fries &amp; coleslaw.</small>			
MALIBU CHICKEN	13.99		680
DOUBLE MALIBU CHICKEN ★	18.49		1090
ITALIAN HERB CHICKEN	14.49		230



## SAVORY SEAFOOD

		CHOICE OF SIDE INCLUDED 80-760 CALS	Cals
FRESH GRILLED SALMON 6oz ★	19.79		370
CILANTRO LIME BARRAMUNDI	18.49		450
GRILLED SHRIMP SKEWERS (2)	17.79		440
SHRIMP, SHRIMP, SHRIMP	19.79		1240
<small>Mini crispy, jumbo crispy and shrimp skewer on rice. Side not included.</small>			
JUMBO CRISPY SHRIMP (6)	12.99		430



TRY OUR NEW **SPECIALTY LEMONADES** \$4.99 EACH  
MANGO, PEACH, STRAWBERRY

SENIORS GET A **15% DISCOUNT** OFF ALL GRILL ENTREES



# Sizzler® SALAD BAR

## SALAD BAR HAND-CRAFTED



### UNLIMITED SALAD

UNLIMITED SALAD BAR*	Per Guest 17.99
LUNCH* MON-FRI UNTIL 4PM	15.29
SENIORS*	15.29
KIDS*	8.49

### SALAD TO GO

SALAD BAR TO GO*	15.29
------------------	-------

## ADD SALAD TO YOUR ENTRÉE

SALAD BAR (UNLIMITED)\*  
Includes salad bar, hot bar, soups & desserts.

**\$8.49**

ITEMS PRICED PER PERSON.  
DINE IN ONLY. PLEASE NO SHARING.

**OVER 50  
FRESH ITEMS**  
INCLUDING SOUPS,  
HOT BAR AND DESSERTS

## SALAD BAR BASICS

- ENJOY AS MUCH AS YOU'D LIKE WHILE YOU'RE HERE – SECONDS, THIRDS, & FOURTHS WELCOME!
- SALAD BAR ACCESS IS PER GUEST.
- SALAD BAR FAVORITES ARE MEANT TO BE ENJOYED IN THE RESTAURANT.

**HAND MADE DRESSINGS  
SOUPS MADE FRESH DAILY**

\*See salad bar for calorie declarations



**PREPARED  
FRESH DAILY**

# Sizzler® SIDES

	Cals
BAKED POTATO	510
FRENCH FRIES	500
RICE PILAF	170
GARLIC MASHED POTATOES	150
CILANTRO LIME RICE	150
VEGETABLE MEDLEY	80

**SIDES INCLUDED  
WITH THE PURCHASE  
OF ANY ENTRÉE**

OR ADD TO YOUR MEAL FOR

**\$4.29**  
EACH

## BEVERAGES

**BEVERAGE \$3.99 0-300 CAL**

PEPSI, DIET PEPSI, MOUNTAIN DEW, DR PEPPER,  
STARRY, ROOT BEER, RASPBERRY ICED TEA

## BEER

**SM \$5.99 LG \$8.29**

HEINEKEN, CORONA, BUDWEISER, BUD LIGHT, MODELO

## WINE

**GLASS \$7.49**

ROSE, CABERNET SAUVIGNON, CHARDONNAY, MERLOT



**KIDS**  
10 AND UNDER

	Cals	*
SALAD BAR <small>KIDS UNDER 3 EAT FREE! SIDE NOT INCLUDED.</small>	8.49	
STEAK BITEZZ	8.49	170
KIDS CHEESEBURGER	7.49	690
GRILLED CHEESE	6.99	490
GRILLED CHICKEN	7.49	150
CHICKEN TENDERS	7.49	450

**INCLUDES A SIDE OF  
APPLESAUCE CUP  
OR FRIES**

50  
CAL

260  
CAL

\*See salad bar for calorie declarations